

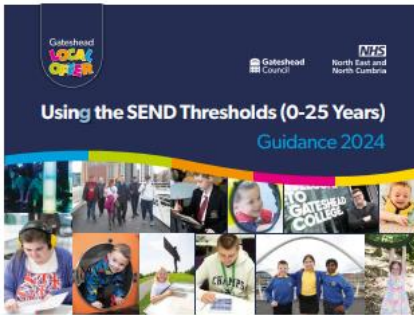
Dear Parents and Carers,

## Website Updates – what has been uploaded this week?

All Friday letters and updates (not linked to specific areas: Safeguarding, Online Safety etc.), will be published in either: **Parents – Friday Letters – Spring Term 2 2024 OR Parents – Letters and Flyers**

## Friday Letter 15<sup>th</sup> March 2024

<https://www.thedriveprimary.co.uk/friday-letters/>



## SEND Thresholds

The SEND Thresholds are a multi-disciplinary approach across Education, Health, and Social Care to develop a consistent and informative approach to embedding the Graduated Approach across Gateshead. This will ensure that children and young people from 0-25 years get the right support, in the right place, at the right time. The Thresholds will provide a helpful reference point in identifying the level of need and will support children and young people with additional needs with consistency across schools, colleges, and other settings.

The Thresholds are being gradually introduced into settings throughout 2024. The Drive have already started using this invaluable resource and they will become part of our target setting for Support Plans and parent/carer review meetings. For more information and to watch a short parent/carer information video, please visit.

<https://gateshead-localoffer.org/send-thresholds/>.

If you have any questions on how this resources might impact your child (children on the SEND register or who have a particular barrier to learning), please contact myself or Mrs Tate. We look forward to using the SEND Thresholds with you next term.

## Active Travel Breakfast and Dr Bike

A great week this week promoting active travel. There was a buzz in the hall on Monday, with Lou from Sustrans commenting on how amazing our families were when they came in for their active breakfast – obviously, you are all fab!

On Tuesday, all the bikes that were brought in for checking got an MOT, and the team kindly put notes on each bike if anything further (that they couldn't fix) needed doing or if your child's bike had been given a green tick for safety!

Keep being active when travelling to school: fingers crossed we get a prize at the end of the challenge!

## Nursery Trip

Nursery had such a fabulous time on their trip to The Baltic this week! The children were all so sensible and made the entire school proud of how well they behaved! They enjoyed exploring the learning lounge, sensory room, and the resources with great curiosity. Mrs Calvert and Mrs Grant said that it was an absolute pleasure to watch and be part of their experience. Of course, we would like to thank the parents who were able to join the team, and hope they had as much fun as the children did!

## Year 4 Quicksticks Hockey

A group of Year 4 children took part in a hockey competition this week. Considering it was their first time playing hockey, they did themselves and The Drive very proud and as one of the team said, 'It is not always about the winning, it is the taking part that counts.' Very well put and a very mature way of looking at it!

Mrs C was very proud of their sportsmanship and they all went and thanked the organisers at the end, unprompted may I add! Well done and we look forward to the next event!





# The Drive Community Primary School

Mrs R Farren, Head Teacher  
The Drive, Felling, Gateshead, NE10 0PY  
Tel: (0191) 421 0390  
www.thedriveprimary.org

## Comic Relief

Thank you to everyone who donated money towards this amazing charity. So far we have raised £100.

## Attendance – The League and attendance update

**0 points if attendance is below 96%**

**1 point awarded for weekly attendance figures between 96% - 97.5%**

**2 points awarded for weekly attendance figures between 97.6% - 98.9%**

**3 points awarded for weekly attendance figures between 99% - 100%**

Year 2 were awarded points this week, well done! It doesn't look like anyone is going to be able to chase Year 3, so they will be the class having the celebration next week. Well done! The League will start up again in the Summer Term, with hopefully less illness in the air!

As always, if you need to speak to school about your child's attendance and punctuality, please don't hesitate to contact us: we are happy to help!

Teams	Total Points	Overall Weekly Attendance
Nursery	4	91.62% -
Reception	1	81.67% -
Year 1	2	92.86% -
Year 2	3	96.67% +
Year 3	10	94% +
Year 4	0	86.4% -
Year 5	0	87.62% -
Year 6	1	91.54% -

Have a lovely weekend everyone.

Yours sincerely,

Mrs R Farren  
Head Teacher



Artsmark  
Gold Award  
Awarded by Arts  
Council England





# The Drive Community Primary School

Mrs R Farren, Head Teacher  
 The Drive, Felling, Gateshead, NE10 0PY  
 Tel: (0191) 421 0390  
[www.thedriveprimary.org](http://www.thedriveprimary.org)

**Dates for the Diary – dates will be added to and possibly changes made. Keep an eye on our website calendar also. Just a reminder, a 'C' will feature next to an event that requires parent/carer consent. PLEASE NOTE, CONSENT IS NOW GIVEN ON PARENT PAY [www.parentpay.com](http://www.parentpay.com). All letters can be found in Letters and Flyer on our school website.**

<https://www.thedriveprimary.co.uk/letter-and-flyers/>

**Highlighted items have been added this week.**

Spring Term 2 2024 – 5 week half term	
Monday 11 <sup>th</sup> March – 22 <sup>nd</sup> March	Sustrans Big Walk and Wheel Challenge (2 weeks) <b>Letter issued 4.3.24.</b>
Tuesday 19 <sup>th</sup> March	Dance Festival <b>C</b> <b>Letter issued February 2024.</b>
	Attendance Party <b>C</b> <b>Letter issued 12.03.24</b>
Wednesday 20 <sup>th</sup> March	<b>Pizza and Movie - Dance Festival Participants Celebration</b> <b>Letter issued 13.03.24</b>
Friday 22 <sup>nd</sup> March	Big Walk and Wheel Celebration Assembly - Sustrans
Monday 25 <sup>th</sup> March	Spud Decorating – Parents/carers welcome (PM) <b>Letter issued 15.03.24</b>
Tuesday 26 <sup>th</sup> March	Whole School Competition (in school) – Active Future <b>Further details to follow.</b>
Wednesday 27 <sup>th</sup> March	Reception Trip – Hancock Museum <b>C</b> <b>Letter issued 6.3.24</b>
	DOJO Celebration <b>Further details to follow.</b>
Thursday 28 <sup>th</sup> March	Early Years Sport Festival <b>C</b> <b>Further details to follow.</b>
	Easter Raffle <b>Letter issued 15.03.24</b>
	Break up for Easter
Friday 29 <sup>th</sup> March	Bank Holiday – Good Friday
Monday 15 <sup>th</sup> April	Return to school after Easter – <b>Summer 1 6 week half term</b>



Artsmark  
Gold Award  
Awarded by Arts  
Council England

